



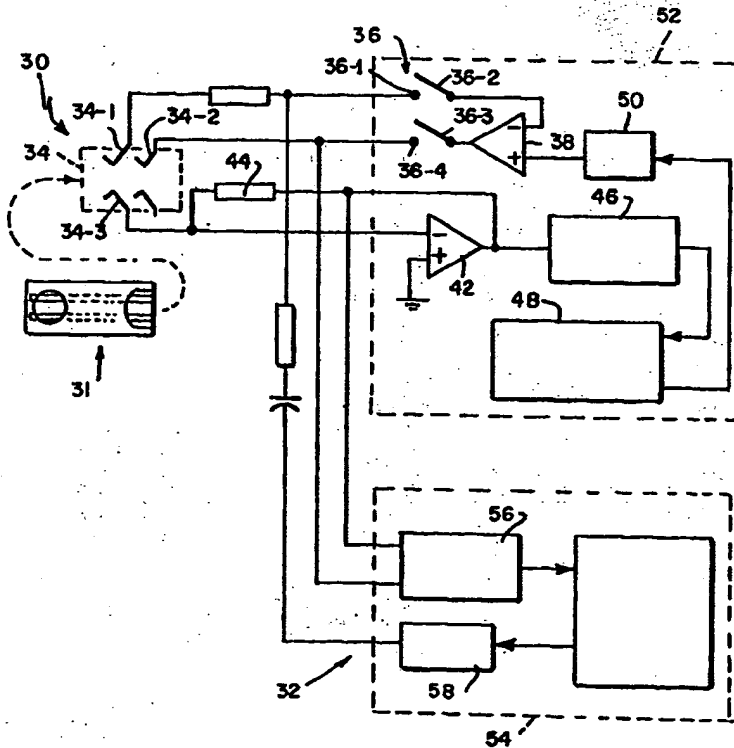
INTERNATIONAL APPLICATION PUBLISHED UNDER THE PATENT COOPERATION TREATY (PCT)

<p>(51) International Patent Classification ⁶ : G01N 27/26, 27/02, 27/28</p>	<p>A1</p>	<p>(11) International Publication Number: WO 99/32881 (43) International Publication Date: 1 July 1999 (01.07.99)</p>
<p>(21) International Application Number: PCT/US98/27203 (22) International Filing Date: 21 December 1998 (21.12.98) (30) Priority Data: 08/996,280 22 December 1997 (22.12.97) US (63) Related by Continuation (CON) or Continuation-in-Part (CIP) to Earlier Application US 08/996,280 (CIP) Filed on 22 December 1997 (22.12.97) (71) Applicant (for all designated States except US): ROCHE DIAGNOSTICS CORPORATION [US/US]; 9115 Hague Road, P.O. Box 50528, Indianapolis, IN 46250-0528 (US). (72) Inventors; and (75) Inventors/Applicants (for US only): BEATY, Terry, Allen [US/US]; 7251 Lakeside Drive, Indianapolis, IN 46278 (US). KUHN, Lance, Scott [US/US]; 8334 Barstow Drive, Fishers, IN 46038 (US). SVETNIK, Vladimir [US/US]; 539 Cedar Lake Court, Carmel, IN 46032 (US). BURKE, David, W. [US/US]; Apartment D, 1931 Madison Court, Carmel, IN 46032 (US).</p>	<p>(74) Agent: CONARD, Richard, D.; Barnes & Thornburg, 11 South Meridian Street, Indianapolis, IN 46204 (US). (81) Designated States: AL, AM, AT, AU, AZ, BA, BB, BG, BR, BY, CA, CH, CN, CU, CZ, DE, DK, EE, ES, FI, GB, GD, GE, GH, GM, HR, HU, ID, IL, IN, IS, JP, KE, KG, KP, KR, KZ, LC, LK, LR, LS, LT, LU, LV, MD, MG, MK, MN, MW, MX, NO, NZ, PL, PT, RO, RU, SD, SE, SG, SI, SK, SL, TJ, TM, TR, TT, UA, UG, US, UZ, VN, YU, ZW, ARIPO patent (GH, GM, KE, LS, MW, SD, SZ, UG, ZW), Eurasian patent (AM, AZ, BY, KG, KZ, MD, RU, TJ, TM), European patent (AT, BE, CH, CY, DE, DK, ES, FI, FR, GB, GR, IE, IT, LU, MC, NL, PT, SE), OAPI patent (BF, BJ, CF, CG, CI, CM, GA, GN, GW, ML, MR, NE, SN, TD, TG). Published <i>With international search report.</i></p>	

(54) Title: **METER**

(57) Abstract

An apparatus (31, 32, 132) and method for determining the concentration of a medically significant component (for example, glucose) of a biological fluid (for example, blood) comprise providing a cell (31) for receiving a sample of the fluid (for example, blood). The cell (31) supports a chemistry which reacts with the medically significant component (for example, glucose), and first and second terminals across which the reaction of the chemistry with the medically significant component can be assessed. An instrument (32, 132) has first (34-2, 134-2) and second (34-3, 134-3) terminals complementary to the first and second terminals, respectively, of the cell (31). An assessment controller (52, 54, 148, 158) is provided. The apparatus determines the type of sample and the concentration of a medically significant component of the sample.



FOR THE PURPOSES OF INFORMATION ONLY

Codes used to identify States party to the PCT on the front pages of pamphlets publishing international applications under the PCT.

AL	Albania	ES	Spain	LS	Lesotho	SI	Slovenia
AM	Armenia	FI	Finland	LT	Lithuania	SK	Slovakia
AT	Austria	FR	France	LU	Luxembourg	SN	Senegal
AU	Australia	GA	Gabon	LV	Latvia	SZ	Swaziland
AZ	Azerbaijan	GB	United Kingdom	MC	Monaco	TD	Chad
BA	Bosnia and Herzegovina	GE	Georgia	MD	Republic of Moldova	TG	Togo
BB	Barbados	GH	Ghana	MG	Madagascar	TJ	Tajikistan
BE	Belgium	GN	Guinea	MK	The former Yugoslav Republic of Macedonia	TM	Turkmenistan
BF	Burkina Faso	GR	Greece	ML	Mali	TR	Turkey
BG	Bulgaria	HU	Hungary	MN	Mongolia	TT	Trinidad and Tobago
BJ	Benin	IE	Ireland	MR	Mauritania	UA	Ukraine
BR	Brazil	IL	Israel	MW	Malawi	UG	Uganda
BY	Belarus	IS	Iceland	MX	Mexico	US	United States of America
CA	Canada	IT	Italy	NE	Niger	UZ	Uzbekistan
CF	Central African Republic	JP	Japan	NL	Netherlands	VN	Viet Nam
CG	Congo	KE	Kenya	NO	Norway	YU	Yugoslavia
CH	Switzerland	KG	Kyrgyzstan	NZ	New Zealand	ZW	Zimbabwe
CI	Côte d'Ivoire	KP	Democratic People's Republic of Korea	PL	Poland		
CM	Cameroon	KR	Republic of Korea	PT	Portugal		
CN	China	KZ	Kazakistan	RO	Romania		
CU	Cuba	LC	Saint Lucia	RU	Russian Federation		
CZ	Czech Republic	LI	Liechtenstein	SD	Sudan		
DE	Germany	LK	Sri Lanka	SE	Sweden		
DK	Denmark	LR	Liberia	SG	Singapore		
EE	Estonia						

METERBackground of the Invention

This invention relates to methods and apparatus for improving the
5 accuracy of measurements made with instruments of the type described in, for
example, U. S. Patents: 5,243,516; 5,288,636; 5,352,351; 5,385,846; and 5,508,171.
The invention is disclosed in the context of such an instrument, but is believed to be
useful in other instruments of this general type as well.

There are a number of instruments for the determination of the
10 concentrations of biologically significant components of bodily fluids, such as, for
example, the glucose concentration of blood. There are, for example, the instruments
described in U. S. Patents: 3,770,607; 3,838,033; 3,902,970; 3,925,183; 3,937,615;
4,005,002; 4,040,908; 4,086,631; 4,123,701; 4,127,448; 4,214,968; 4,217,196;
4,224,125; 4,225,410; 4,230,537; 4,260,680; 4,263,343; 4,265,250; 4,273,134;
15 4,301,412; 4,303,887; 4,366,033; 4,407,959; 4,413,628; 4,420,564; 4,431,004;
4,436,094; 4,440,175; 4,477,314; 4,477,575; 4,499,423; 4,517,291; 4,654,197;
4,671,288; 4,679,562; 4,682,602; 4,703,756; 4,711,245; 4,734,184; 4,750,496;
4,759,828; 4,789,804; 4,795,542; 4,805,624; 4,816,224; 4,820,399; 4,897,162;
4,897,173; 4,919,770; 4,927,516; 4,935,106; 4,938,860; 4,940,945; 4,970,145;
20 4,975,647; 4,999,582; 4,999,632; 5,108,564; 5,128,015; 5,243,516; 5,269,891;
5,288,636; 5,312,762; 5,352,351; 5,385,846; 5,395,504; 5,469,846; 5,508,171;
5,508,203; and 5,509,410: German Patent Specification 3,228,542: European Patent
Specifications: 206,218; 230,472; 241,309; 255,291; and, 471,986: and, Japanese
Published Patent Applications JP 63-128,252 and 63-111,453. There are also the
25 methods and apparatus described in: Talbott, et al, "A New Microchemical Approach
to Amperometric Analysis," Microchemical Journal, Vol. 37, pp. 5-12 (1988); Morris,
et al, "An Electrochemical Capillary Fill Device for the Analysis of Glucose
Incorporating Glucose Oxidase and Ruthenium (III) Hexamine as Mediator,
Electroanalysis," Vol. 4, pp. 1-9 (1992); Cass, et al, "Ferrocene-Mediated Enzyme
30 Electrode for Amperometric Determination of Glucose," Anal. Chem., Vol. 56, pp.
667-671 (1984); Zhao, "Contributions of Suspending Medium to Electrical
Impedance of Blood," Biochimica et Biophysica Acta, Vol. 1201, pp. 179-185 (1994);

- Zhao, "Electrical Impedance and Haematocrit of Human Blood with Various Anticoagulants," *Physiol. Meas.*, Vol. 14, pp. 299-307 (1993); Muller, et al., "Influence of Hematocrit and Platelet Count on Impedance and Reactivity of Whole Blood for Electrical Aggregometry," *Journal of Pharmacological and Toxicological Methods*, Vol. 34, pp. 17-22 (1995); Preidel, et al., "In Vitro Measurements with Electrochemical Glucose Sensor in Blood," *Biomed. Biochim. Acta*, Vol. 48, pp. 897-903 (1989); Preidel, et al., "Glucose Measurements by Electrochemical Sensor in the Extracorporeal Blood Circulation of a Sheep," *Sensors and Actuators B*, Vol. 2, pp.257-263 (1990); Saeger, et al., "Influence of Urea on the Glucose Measurement by Electrochemical Sensor in the Extracorporeal Blood Circulation of a Sheep," *Biomed. Biochim. Acta*, Vol. 50, pp. 885-891 (1991); Kasapbasioglu, et al., "An Impedance Based Ultra-Thin Platinum Island Film Glucose Sensor," *Sensors and Actuators B*, Vol. 13-14, pp. 749-751 (1993); Beyer, et al., "Development and Application of a New Enzyme Sensor Type Based on the EIS-Capacitance Structure for Bioprocess Control," *Biosensors & Bioelectronics*, Vol. 9, pp. 17-21 (1994); Mohri, et al., "Characteristic Response of Electrochemical Nonlinearity to Taste Compounds with a Gold Electrode Modified with 4-Aminobenzenethiol," *Bull. Chem. Soc. Jpn.*, Vol. 66, pp. 1328-1332 (1993); Cardosi, et al., "The Realization of Electron Transfer from Biological Molecules to Electrodes," *Biosensors Fundamentals and Applications*, chapt. 15 (Turner, et al, eds., Oxford University Press, 1987); Mell, et al., "Amperometric Response Enhancement of the Immobilized Glucose Oxidase Enzyme Electrode," *Analytical Chemistry*, Vol. 48, pp. 1597-1601 (Sept. 1976); Mell, et al., "A Model for the Amperometric Enzyme Electrode Obtained Through Digital Simulation and Applied to the Immobilized Glucose Oxidase System," *Analytical Chemistry*, Vol. 47, pp. 299-307 (Feb. 1975); Myland, et al., "Membrane-Covered Oxygen Sensors: An Exact Treatment of the Switch-on Transient," *Journal of the Electrochemical Society*, Vol. 131, pp. 1815-1823 (Aug. 1984); Bradley, et al., "Kinetic Analysis of Enzyme Electrode Response," *Anal. Chem.*, Vol. 56, pp. 664-667 (1984); Koichi, "Measurements of Current-Potential Curves, 6, Cottrell Equation and its Analogs. What Can We Know from Chronoamperometry?" *Denki Kagaku oyobi Kogyo Butsuri Kagaku*, Vol. 54, no.6, pp. 471-5 (1986); Williams, et al., "Electrochemical-Enzymatic Analysis of Blood Glucose and Lactate," *Analytical*

Chemistry, Vol. 42, no. 1, pp. 118-121 (Jan. 1970); and, Gebhardt, et al,
"Electrocatalytic Glucose Sensor," Siemens Forsch.-u. Entwickl.-Ber. Bd., Vol. 12,
pp. 91-95 (1983). This listing is not intended as a representation that a complete
search of all relevant prior art has been conducted, or that no better references than
5 those listed exist. Nor should any such representation be inferred.

Disclosure of the Invention

According to one aspect of the invention, an apparatus for determining
the concentration of a medically significant component of a biological fluid comprises a
10 cell for receiving a sample of the fluid. The cell supports a chemistry which reacts with
the medically significant component and first and second terminals across which the
reaction of the chemistry with the medically significant component can be assessed.
The apparatus further comprises an instrument having first and second terminals
complementary to the first and second terminals, respectively, of the cell. Placement of
15 the first and second terminals of the cell in contact with the first and second terminals,
respectively, of the instrument permits the instrument to assess the reaction. The
instrument includes an assessment controller for applying across the first and second
terminals of the instrument a first signal, determining a first response of the cell to the
first signal, and determining based upon the first response whether to proceed with the
20 determination of the concentration of the medically significant component of the
biological fluid.

According to another aspect of the invention, an apparatus for
determining the concentration of a medically significant component of a biological fluid
comprises a cell for receiving a sample of the fluid. The cell supports a chemistry
25 which reacts with the medically significant component and first and second terminals
across which the reaction of the chemistry with the medically significant component
can be assessed. The apparatus further comprises an instrument having first and
second terminals complementary to the first and second terminals, respectively, of the
cell. Placement of the first and second terminals of the cell in contact with the first and
30 second terminals, respectively, of the instrument permits the instrument to assess the
reaction. The instrument includes an assessment controller for applying across the first
and second terminals of the instrument a first signal, determining a first correction

value in response of the cell to the first signal, assessing the reaction of the medically significant component with the chemistry and combining the correction value with the result of the reaction assessment to produce an indication of the concentration of the medically significant component in the sample.

5 According to another aspect of the invention, an apparatus for determining the concentration of a medically significant component of a biological fluid comprises a cell for receiving a sample of the fluid. The cell supports a chemistry which reacts with the medically significant component and first and second terminals across which the reaction of the chemistry with the medically significant component
10 can be assessed. The apparatus further comprises an instrument having first and second terminals complementary to the first and second terminals, respectively, of the cell. Placement of the first and second terminals of the cell in contact with the first and second terminals, respectively, of the instrument permits the instrument to assess the reaction. The instrument includes an assessment controller for applying across the first
15 and second terminals of the instrument a first signal, determining the identity of the sample in response of the cell to the first signal, and producing an indication of the identity of the sample.

 According to yet another aspect of the invention, a method for determining the concentration of a medically significant component of a biological fluid
20 comprises providing a cell for receiving a sample of the fluid, and providing on the cell a chemistry which reacts with the medically significant component and first and second terminals across which the reaction of the chemistry with the medically significant component can be assessed. The method further comprises providing an instrument having first and second terminals complementary to the first and second terminals,
25 respectively, of the cell. Placement of the first and second terminals of the cell in contact with the first and second terminals, respectively, of the instrument permits the instrument to assess the reaction. The method further comprises providing in the instrument an assessment controller, causing the assessment controller to apply across the first and second terminals of the instrument a first signal, causing the assessment
30 controller to determine a first response of the cell to the first signal, and causing the assessment controller to determine, based upon the first response, whether to proceed

with the determination of the concentration of the medically significant component of the biological fluid.

According to a further aspect of the invention, a method for determining the concentration of a medically significant component of a biological fluid comprises providing a cell for receiving a sample of the fluid, and providing on the cell
5 a chemistry which reacts with the medically significant component and first and second terminals across which the reaction of the chemistry with the medically significant component can be assessed. The method further comprises providing an instrument having first and second terminals complementary to the first and second terminals,
10 respectively, of the cell. Placement of the first and second terminals of the cell in contact with the first and second terminals, respectively, of the instrument permits the instrument to assess the reaction. The method further comprises providing in the instrument an assessment controller, causing the assessment controller to apply across the first and second terminals of the instrument a first signal, to determine a first
15 correction value in response to the first signal, to assess the reaction of the medically significant component with the chemistry, and to combine the correction value with the result of the reaction assessment to produce an indication of the concentration of the medically significant component in the sample.

According to a further aspect of the invention, a method for
20 determining the concentration of a medically significant component of a biological fluid comprises providing a cell for receiving a sample of the fluid, and providing on the cell a chemistry which reacts with the medically significant component and first and second terminals across which the reaction of the chemistry with the medically significant component can be assessed. The method further comprises providing an instrument
25 having first and second terminals complementary to the first and second terminals, respectively, of the cell. Placement of the first and second terminals of the cell in contact with the first and second terminals, respectively, of the instrument permits the instrument to assess the reaction. The method further comprises providing in the instrument an assessment controller for applying across the first and second terminals
30 of the instrument a first signal, determining the identity of the sample in response of the cell to the first signal, and producing an indication of the identity of the sample.

Illustratively, the first signal comprises a signal having an AC component. Further illustratively, the first signal comprises an AC signal.

Additionally illustratively, the method of, and apparatus for, determining the correction value, the method of, and apparatus for, determining the identity of the sample, and the method of, and apparatus for, determining whether to proceed with the determination of the concentration of the medically significant component of the biological fluid comprise the step of, and apparatus for, determining the impedance across terminals of the cell.

10 Brief Description of the Drawings

The invention may best be understood by referring to the following detailed description and accompanying drawings which illustrate the invention. In the drawings:

Fig. 1 illustrates a schematic diagram of a circuit useful in understanding the invention;

Fig. 2 illustrates a partly block and partly schematic diagram of an instrument constructed according to the present invention;

Fig. 3 illustrates a partly block and partly schematic diagram of another instrument constructed according to the present invention;

Fig. 4 illustrates a partly block and partly schematic diagram of another instrument constructed according to the present invention;

Fig. 5 illustrates glucose concentration results achieved in several forty second glucose concentration determinations with standard glucose test solutions;

Fig. 6 illustrates glucose concentration results achieved in several ten second glucose concentration determinations with standard glucose test solutions; and,

Fig. 7 illustrates glucose concentration results achieved in several ten second glucose concentration determinations with standard glucose test solutions.

Detailed Descriptions of Illustrative Embodiments

30 Instruments are known which employ devices such as disposable mediated amperometric cells (sometimes referred to hereinafter as biosensors) which provide, for example, characteristic electrical impedances when treated with biological

fluids, blood or urine for example, having certain corresponding concentrations of biologically significant components, such as, for example, glucose. Such measurement systems are known to be susceptible to variations in the temperature of the biological fluids and to interference by the presence in the biological fluids of other components, known and sometimes referred to hereinafter as interferents. In many cases, these sources of error have effects on the biosensor output of the same order of magnitude as the concentration of the component, measurement of which is sought. It may not be possible to develop a biosensor which will measure only the concentration of the component whose concentration is sought in the presence of these sources of error.

10 An example of this phenomenon is the hematocrit interference in a biosensor of the type described in U. S. Patents: 5,243,516; 5,288,636; 5,352,351; 5,385,846 and, 5,508,171, with the determination of the glucose concentration of whole blood. Since all whole blood contains red blood cells, and since the hematocrit can vary over a fairly wide range in individuals who might wish to rely upon such biosensor testing, the utility of a hematocrit-compensated glucose biosensor is clear.

Equally problematic is the sensitivity of many commercially available biosensors to the volume of the dopant biological fluid. In the case of glucose concentration of whole blood, for example, many presently available biosensors are sensitive to the volume of blood with which they are doped for determination of glucose concentration. Since many of the tests which are presently being conducted using biosensors are being conducted by people who are monitoring, for example, the glucose concentrations of their own blood, the volumes of the blood samples with which the biosensors are doped are not predictable with a great degree of certainty. While the careful design of the biosensor itself can prevent some errors, such as undoped biosensors, substantially underdoped biosensors and substantially overdoped biosensors, for example, it cannot practically take into account the full range of doping volume variation.

We have discovered that measurement of the real component or the imaginary component, or both, of the AC impedance of an appropriately designed biosensor provides reasonable insight into sample temperature and the concentrations of certain physical and chemical interferents. In biosensors of the general types described in U. S. Patents: 5,243,516; 5,288,636; 5,352,351; 5,385,846; 5,508,171;

5,437,999; and, U.S.S.N. 08/985,840, filed December 5, 1997 and assigned to the same assignee as this application, such physical interferents include, for example, hematocrit, and such chemical interferents include, for example, bilirubin, uric acid and oxygen. We have discovered that measurement of the real component or the
5 imaginary component, or both, of the AC impedance of an appropriately designed biosensor also provides reasonable insight into the volume of a sample with which the biosensor is doped, and the identity of that sample; that is, whether the sample is a sample of blood or some other bodily fluid, or a sample of some control used, for example, in calibration or troubleshooting of the instrument. We have discovered that
10 sample temperature, the concentrations of such physical and chemical interferents, the identity of the sample and the sample volume can be ascertained at judiciously selected AC frequencies, providing reasonable isolation of the determinations of the effects of sample temperature, interferent concentrations and sample volume and identity from each other, and thereby increasing the accuracy of, for example, the interferent effect
15 determinations, and their subsequent correction out of the indicated glucose concentration. We have also found that the speeds at which acceptably accurate readings of corrected glucose concentration are obtained can be markedly reduced. The appropriately designed biosensor must be able to tolerate the determination of these AC impedances, using, for example, AC signals having peak amplitudes in the
20 range of a few tens of millivolts, without jeopardizing the measurement of the glucose concentration, which the biosensor will perform either before, concurrently with, or after it performs the AC impedance determination.

By way of example only, we have determined that in biosensors of the type described in U. S. Patents: 5,243,516; 5,288,636; 5,352,351; 5,385,846;
25 5,508,171; 5,437,999; and, U.S.S.N. 08/985,840, it is possible to employ a low-magnitude, for example, less than about 40mV rms or so, AC signal in the range of less than about .1Hz to 10KHz or so with no DC offset to compensate for sample temperature, hematocrit, bilirubin concentration, uric acid concentration and oxygen concentration, and to determine identity of the sample with which the biosensor is
30 dosed, and adequacy of dosed blood sample volume for a test for glucose concentration. We have determined, for example, that at about 1300Hz, both hematocrit and glucose concentration have relatively little effect on AC impedance,

while sample volume and sample identity have relatively substantially greater, fairly readily ascertainable, effects on AC impedance. This provides an ideal way to determine the adequacy of the sample volume with which the biosensor is dosed and the identity of the sample. If the sample is determined to be blood, and the sample
5 volume is determined to be inadequate to test meaningfully for hematocrit, glucose concentration, and so on, the test is discontinued and the user is notified of the discontinuance of the test.

We have determined that the combined effect of sample temperature and hematocrit can fairly effectively be isolated from other physical and chemical
10 interferences of interest using frequencies in the range of from about 2KHz to about 10KHz. So, for example, once the adequacy of the sample volume for test has been established, a 2KHz signal can be applied to the biosensor and the real and imaginary components of impedance of the biosensor/sample system can be determined. This indicated impedance can be adjusted by an experimentally determined scaling factor
15 governed by, among other things, the characteristics of the biosensor and the instrument, and combined with an indicated glucose concentration to arrive at a glucose concentration compensated for the combined effects of sample temperature and hematocrit.

These determinations illustratively are made before the amperometric
20 determination of the glucose concentration of the blood sample. DC offset may be avoided, if necessary, to reduce the likelihood of affecting the amperometric determination of the glucose concentration which, it must be remembered, is going to be conducted subsequently in the illustrated embodiments. Similar procedures can be conducted, again in the illustrated embodiments before the amperometric
25 determination of the glucose concentration, to determine the concentrations of other interferences with chemistry for the glucose concentration determination, such as bilirubin, uric acid and oxygen. These determinations are conducted at frequencies at which their effects upon each other and upon other physical and chemical interferences will be optimally decoupled from each other. For example, if, in the chemistry system
30 of the amperometric cell, bilirubin and uric acid are chemical interferences with each other, a frequency or range of frequencies should be selected for the bilirubin concentration determination, which frequency or range of frequencies is optimally

unaffected by the concentrations of uric acid and any other physical and chemical
interferents in the sample. Similarly, a frequency must be selected for the uric acid
concentration determination which is optimally unaffected by the concentrations of
bilirubin and any other physical and chemical interferents in the sample. In each case,
5 however, the determined impedance is converted either directly or via a concentration
determination which can also be displayed to the user or stored in the instrument for
future reference, to a correction factor for application to the indicated glucose
concentration in order to arrive at a more accurate glucose concentration
determination.

10 The methods and apparatus are believed best understood by
consideration of the equivalent circuit of an amperometric sensor of the type described
in U. S. Patents: 5,243,516; 5,288,636; 5,352,351; 5,385,846; 5,508,171; 5,437,999;
and, U.S.S.N. 08/985,840. That equivalent circuit is illustrated in Fig. 1. In Fig. 1, a
resistor 20 represents the uncompensated resistance of the amperometric cell, a
15 capacitor 22 represents the capacitance attributable to the double layer of charge on
the dosed cell with potential applied, a resistor 24 represents the charge transfer
resistance of the cell's chemistry, and a resistor 26 and a capacitor 28 represent the so-
called Warburg impedance. While the lumped electrical parameter models of other
types of amperometric sensors may differ from the model illustrated in Fig. 1, similar
20 analyses of those models will yield conclusions similar to those reached here, namely,
that the real and imaginary components of the cells' or biosensors' electrical
impedances provide techniques for determining quantitatively with some reasonable
degree of accuracy the effects of interferent concentrations, sample volume and
sample identity on the concentration of a biologically significant component of a
25 sample of a body fluid. These conclusions give the instrument and cell designer useful
techniques for determining the adequacy of the volume of a sample applied to a
biosensor, for determining the identity of the sample, and for correcting the indicated
concentration of a biologically significant component of the sample for the
concentration(s) of such interferent(s) so that the effects of the concentration(s) of
30 such interferent(s) can be reduced in the indicated concentration of the biologically
significant component of interest to provide more accurate information on the
concentration of the biologically significant component of interest.

Blood sample studies analyzing the magnitudes of the real and imaginary components of the impedance of the equivalent circuit of Fig. 1 have established that in the range of about 1KHz-10KHz, there is very little dependence of the imaginary component of impedance on glucose concentration of the sample, while there is sufficient dependence of the magnitude of impedance on the combination of sample temperature and hematocrit to permit a sample first to be subjected to a low-magnitude AC signal in this frequency range, the magnitude of impedance to be determined, and a combined sample temperature/hematocrit correction factor to be combined with the indicated glucose concentration determined using the amperometry techniques described in, for example, U. S. Patents: 5,243,516; 5,288,636; 5,352,351; 5,385,846; 5,508,171; 5,437,999; and, U.S.S.N. 08/985,840, to yield a glucose concentration corrected for the combined effects of sample temperature and hematocrit. Similar techniques can be employed to determine sample volume and sample type. The sample volume determination, however, ordinarily will result in a go-no go determination for the remainder of the assay. The sample type determination ordinarily will determine whether the instrument proceeds to a glucose concentration subroutine including, for example, determination of interferent correction factors, or to a diagnostic subroutine used to set up the instrument for a later glucose concentration determination.

Referring to Fig. 2, a strip connector 30 of the general type illustrated in U. S. Patents: 5,243,516; 5,288,636; 5,352,351; 5,385,846; and, 5,508,171, makes contact between a disposable amperometric sensor cell or biosensor 31 of the general type illustrated in those patents and the instrument 32. The indicated glucose concentration functionality of the instrument 32 is largely as described in those patents. However, additional functions, namely, the correction of the indicated glucose concentration for blood sample volume and the combined effect of sample temperature and hematocrit of the blood sample under test, are implemented in the instrument 32 according to the present invention. It has been established that eight bit analog-to-digital (A/D) and digital-to-analog (D/A) computational power permits the instrument 32 to achieve accuracies in the range of about one-half percent or less. A first terminal 34-1 of a connector 34 is coupled through a 10K Ω resistor to a terminal 36-1 of a switch 36. A terminal 36-2 of switch 36 is coupled to the inverting, or -, input

terminal of a difference amplifier 38. An output terminal of amplifier 38 is coupled to a terminal 36-3 of switch 36. A terminal 36-4 of switch 36 is coupled to a terminal 34-2 of connector 34. DC excitation across the biosensor 31 is established by the output of amplifier 38. For accurate setting of DC excitation of the biosensor 31, feedback from terminal 34-1 is returned to the - input terminal of amplifier 38. Terminals 34-1 and 34-2 contact a common electrode on biosensor 31 for enhanced accuracy of excitation.

A terminal 34-3 of connector 34 is coupled to a - input terminal of a difference amplifier 42. An output terminal of amplifier 42 is coupled through a 7.5K Ω resistor 44 to the - input terminal thereof. The non-inverting, or +, input terminal of amplifier 42 is coupled to the common of the circuit power supply. An output terminal of amplifier 42 is coupled to an input terminal of a thirteen bit A/D converter 46. An output port of A/D converter 46 is coupled to an input port of a processor 48 with supporting functions which performs the indicated glucose measurement functions as described in U. S. Patents: 5,243,516; 5,288,636; 5,352,351; 5,385,846; and, 5,508,171. An output port of processor 48 is coupled to an input port of an eight bit D/A converter 50. An output terminal of D/A converter 50 is coupled to the + input terminal of amplifier 38. The functions of components 38, 42, 46, 48 and 50 illustratively, although not by any means necessarily, are embodied in an application-specific integrated circuit(ASIC) 52. The remaining, hematocrit compensating and sample volume determining functions of instrument 32 illustratively are embodied in a NEC μ PD78054 microprocessor(μ P) 54 which also has input A/D and output D/A converting capabilities 56 and 58, respectively. In Fig. 2, the input A/D and output D/A capabilities 56, 58 are illustrated separately from the processing functions of μ P 54 for purposes of clarity. Terminal 36-4 of switch 36 is coupled to an input terminal of A/D converter 56. The output terminal of amplifier 42 is coupled to an input terminal of A/D converter 56. The output terminal of D/A converter 58 is coupled through a .1 μ F capacitor and a 400K Ω resistor in series to terminal 36-1 of switch 36 for AC excitation in this example. Here, an AC excitation signal is summed with the DC excitation provided by amplifier 38.

The calculations of the real and imaginary components of the AC impedance of the biosensor cell 31 coupled to terminals 34-1, -2 and -3 are made by

exciting terminal 34-2 of connector 34 at the desired frequency, for example, 1300Hz or 10 KHz, at which the parameter to be determined, be it sample identity or volume or hematocrit, or whatever other parameter is of interest and can be determined this way, varies with sufficient magnitude and phase and is optimally uncoupled from, that is, is not interfered with by, the concentrations of other components of the blood on the cell 31.

The calculation of the real and imaginary components of the cell 31 impedance from the AC excitation and response are achieved as follows. The eight bit excitation samples are N values $E(0), E(1), E(2), \dots E(N-1)$. These values are developed by sampling the excitation by A/D converter 56. The eight bit response samples are N values $V(0), V(1), V(2), \dots V(N-1)$. These values are A/D converted by A/D converter 56 and returned to the processor function of μP 54. Terminal 34-2 of connector 34 provides the common terminal against which these values are referenced. A scale factor K accounts for various gain factors involved in excitation and measurement. The excitation frequency is F Hz. The sample rate is MF, where M illustratively has a value of 5 or more. The period between samples is thus $1/MF$ sec. Arrays $S(n)$ and $C(n)$ of sine and cosine values are calculated and stored in program memory in μP 54 according to the following relations:

$$S(n) = \sin(2\pi F(n/MF)), n=0 \text{ to } (N-1)$$

$$C(n) = \cos(2\pi F(n/MF)), n=0 \text{ to } (N-1).$$

The real and imaginary components of excitation are calculated as follows:

$$E_{re} = \sum_{n=0}^{N-1} S(n)E(n)$$

-14-

The real and imaginary components of response are calculated as

$$E_{im} = \sum_{n=0}^{N-1} C(n)E(n)$$

follows:

$$V_{re} = \sum_{n=0}^{N-1} S(n)V(n)$$

$$V_{im} = \sum_{n=0}^{N-1} C(n)V(n)$$

The magnitudes of the excitation and response are calculated as

5 follows:

$$E = (E_{re}^2 + E_{im}^2)^{1/2},$$

$$V = (V_{re}^2 + V_{im}^2)^{1/2}.$$

10

The magnitude of the strip impedance can then be calculated:

$$|Z| = KE/V.$$

15

The phase of the strip impedance can also be calculated:

$$\arctan \left(\frac{V_{im}}{V_{re}} \right) - \arctan \left(\frac{E_{im}}{E_{re}} \right) = \angle Z$$

Thus, a measurement of actual glucose concentration using an instrument 32 of the type illustrated in Fig. 2 proceeds as follows. A sample of blood is applied to the biosensor 31. Immediately after the instrument 32's electronics detect the deposit of the droplet on the biosensor 31, an AC signal having a frequency of, for example, 1300Hz is applied across terminals 34-2--34-3 of connector 34 and the resulting current is indirectly sampled by μ P 54 by measuring the excitation and response voltages and using the scale factor to obtain current. The impedance magnitude and phase angle are calculated. Using these values, a look-up table in the μ P 54's program memory is consulted to ascertain the nature of the sample and, if blood, whether there is sufficient volume in the blood sample to proceed with the glucose determination phase of the assay. If not, the assay is terminated and this outcome is displayed on the instrument 32's display. If there is sufficient volume to continue with the glucose determination, an AC signal at another frequency, for example, 10 KHz, is applied across terminals 34-2--34-3 of connector 34 and the resulting current is sampled by μ P 54. The impedance and phase angle are again calculated at this second frequency. A second look-up table in the μ P 54's program memory is consulted for an indicated glucose-to-actual glucose correction factor. This correction factor may be a constant, for example, zero, for indicated glucose concentrations less than a first indicated glucose concentration, and variable for indicated glucose concentrations greater than that first indicated glucose concentration, for example. In any event, that correction is stored, and the determination of the indicated glucose concentration proceeds generally as described in U. S. Patents: 5,243,516; 5,288,636; 5,352,351; 5,385,846; and 5,508,171, for example. Once the indicated glucose concentration has been obtained, the correction is then retrieved and applied to the indicated glucose concentration to arrive at the actual glucose concentration which is displayed on the instrument 32's display and/or stored in the instrument 32's memory.

Another embodiment of the invention is illustrated in partly block and partly schematic form in Fig. 3. There, an instrument 132 includes a strip connector 130 of the same general type as strip connector 30 illustrated in Fig. 2. Strip connector 130 is designed to make contact to a biosensor 31. A first terminal 134-1 of a connector 134 is coupled through a 10K Ω resistor to a terminal 136-1 of a switch

-16-

136. A terminal 136-2 of switch 136 is coupled to the - input terminal of a difference amplifier 138. An output terminal of amplifier 138 is coupled to a terminal 136-3 of switch 136. A terminal 136-4 of switch 136 is coupled to a terminal 134-2 of connector 134. DC excitation across the biosensor 31 is established by the output of amplifier 138. For accurate setting of DC excitation of the biosensor 31, feedback from terminal 134-1 is returned to the - input terminal of amplifier 138. Terminals 134-1 and 134-2 contact a common electrode on biosensor 31 for enhanced accuracy of excitation. A terminal 134-3 of connector 134 is coupled to a - input terminal of a difference amplifier 142. An output terminal of amplifier 142 is coupled through a 7.5K Ω resistor 144 to the - input terminal thereof. The + input terminal of amplifier 142 is coupled to the common of the circuit power supply. An output terminal of amplifier 142 is coupled to an input terminal of a thirteen bit A/D converter 146. An output port of A/D converter 146 is coupled to an input port of a processor 148 with supporting functions which performs the indicated glucose measurement functions as described in U. S. Patents: 5,243,516; 5,288,636; 5,352,351; 5,385,846; and, 5,508,171. An output port of processor 148 is coupled to an input port of an eight bit D/A converter 150. An output terminal of D/A converter 150 is coupled to the + input terminal of amplifier 138. The functions of components 138, 142, 146, 148 and 150 illustratively, although not by any means necessarily, are embodied in an ASIC 152.

The real and imaginary components of the AC impedance of the biosensor cell 31 coupled to terminals 134-1, -2 and -3 are calculated by excitation applied between terminals 134-2 and 134-3 of connector 134 at the desired frequencies, for example, by sweeping the low-magnitude AC voltage source 150 through a suitable frequency range of, for example, .1 Hz - 100 Hz or 10 Hz - 10 KHz, throughout some portion or all of which the parameter to be determined, be it sample identity, sample volume, sample temperature/hematocrit, oxygen concentration in the sample, or whatever other parameter is of interest and can be determined this way, varies with sufficient magnitude and phase and is optimally uncoupled from, that is, independent from, the concentrations of other components of the sample on the cell 31.

In the embodiment illustrated in Fig. 3, this low magnitude AC voltage excitation is summed at a summing junction 152 with an optional DC offset 156 which

-17-

may be utilized if it aids the determination of the concentration of the interferent of interest. In the illustrated embodiment, the AC voltage and DC offset are both generated under the control of a microprocessor (μ P) 158 which may be the same μ P which manages the above-mentioned meter 132 functions, or may be a separate μ P.

5 The μ P 158 will typically be programmed to sweep the AC voltage source 150 and adjust the DC offset, depending upon which interferent's concentration the μ P 158 is determining. In this manner, each interferent's concentration may readily be ascertained in the optimum frequency range and at the optimum DC offset for isolation of that particular interferent's concentration. If μ P 158 is used to control sweep and

10 offset, a separate external connection 160 need not be provided from the summing junction 152 to the μ P 158. Since μ P 158 is going to determine the frequency response of the cell 31, the frequencies associated with the determined frequency response can be stored in the μ P 158's memory as the frequency response is being determined. If some other mechanism is employed in the determination of the

15 frequency response, however, it may be necessary to provide feedback 160 to the μ P 158 of the output frequency of source 150, as well as the level of the DC offset 156. In any event, isolation of the summing junction 152 and any feedback path 160 from the cell 31 is provided by an operational amplifier 164 whose input is coupled to summing junction 152, and whose output is coupled through a suitably valued resistor

20 into the feedback path of amplifier 138 to drive the cell 31. Similarly, isolation of the cell 31 from the frequency response-determining input of μ P 158 is provided by an operational amplifier 166 coupled to the output of amplifier 142. Determination of the frequency response of the cell 31 proceeds in known fashion, for example, by fast Fourier transform (FFT) or other known μ P 158-implemented frequency response

25 determining mechanism. The frequency response characteristic of the cell 31 is then compared to the stored frequency response characteristic for the specific interferent whose concentration is being determined, an interferent concentration is determined, and an associated correction value for the indicated glucose concentration is determined and either stored for later use in correcting the indicated glucose

30 concentration or immediately combined with an indicated glucose concentration to achieve a corrected glucose concentration.

Again, ordinarily, the instrument 132 will first determine the various frequency responses of the cell 31 in the various optimally uncoupling frequency ranges, with the various optimally uncoupling AC amplitudes and with the various optimally uncoupling DC offsets, followed by the determination of the indicated
5 glucose concentration, followed by correction of the indicated glucose concentration for the thus-determined concentrations of the various interferents. However, and as previously noted, it may be desirable under certain circumstances and with certain interferents to have the instrument 132 first determine the indicated concentration of glucose before the concentrations of these interferents are determined.

10 Another embodiment of the invention is illustrated in partly block and partly schematic form in Fig. 4. There, an instrument 232 includes a strip connector 230 of the same general type as strip connector 30 illustrated in Fig. 2. Strip connector 230 is designed to make contact to a biosensor 31. A first terminal 234-1 of a connector 234 is coupled to the - input terminal of a difference amplifier 238. An
15 output terminal of amplifier 238 is coupled to a terminal 234-2 of connector 234. DC excitation across the biosensor 31 is established by the output of amplifier 238. For accurate setting of DC excitation of the biosensor 31, feedback from terminal 234-1 is returned to the - input terminal of amplifier 238. Terminals 234-1 and 234-2 contact a common electrode on biosensor 31 for enhanced accuracy of excitation. A terminal
20 234-3 of connector 234 is coupled to a - input terminal of a difference amplifier 242. An output terminal of amplifier 242 is coupled through a 8.25K Ω resistor 244 to the - input terminal thereof. The + input terminal of amplifier 242 is coupled to a 1.667V reference. An output terminal of amplifier 242 is coupled to an input terminal of a fourteen bit A/D converter 246. An output port of A/D converter 246 is coupled to an
25 input port of a processor 248 with supporting functions which performs the indicated glucose measurement functions as described in U. S. Patents: 5,243,516; 5,288,636; 5,352,351; 5,385,846; and, 5,508,171. An output port of processor 248 is coupled to an input port of a thirteen bit D/A converter 250. Amplifier 238 and D/A converter 250 illustratively are integrated into a single device. Amplifier 238 has an open circuit
30 shutdown mode, permitting switches 36, 136 of the embodiments illustrated in Figs. 2-3 to be eliminated and thereby simplifying the circuit somewhat. Otherwise, the circuit illustrated in Fig. 4 functions in much the same way as the circuits illustrated in Figs. 2-

3. An output terminal of D/A converter 250 is coupled to the + input terminal of amplifier 238. The functions of components 238, 242, 246, 248 and 250 illustratively, although not by any means necessarily, are embodied in an ASIC 252. The accuracy and resolution of D/A converter 250 and A/D converter 246 enable both AC and DC strip current measurements and thus a circuit simplification.

Again, it should be understood that the physical and chemical design characteristics of a particular cell will, to a large extent, determine the electrical characteristics of that cell. Therefore, those physical and chemical design characteristics will, to at least the same extent, determine that cell's response to each interferent, to different sample types, and to different sample volumes. It is not possible to predict, for example, in what frequency range hematocrit's concentration will be optimally uncoupled from uric acid's or bilirubin's without reference to the specific physical and chemical characteristics of that cell. Some investigation will be required to determine these optimum frequency ranges. However, the investigation will be relatively routine once the physical and chemical characteristics of the cell are known.

The reduction in the time required to achieve a compensated indication of the glucose concentration of blood can best be appreciated by referring to Figs. 5-7. Fig. 5 illustrates glucose concentration results achieved in several forty second glucose concentration determinations with standard glucose test solutions. The tests whose results are illustrated in Fig. 5 were performed without impedance determination and compensation for the combined effects of temperature and hematocrit described above, but were compensated for temperature and hematocrit using prior art techniques. Fig. 6 illustrates glucose concentration results achieved in several ten second glucose concentration determinations with standard glucose test solutions. The tests whose results are illustrated in Fig. 6 were performed without impedance determination and compensation for the combined effects of temperature and hematocrit described above, but again were compensated for temperature and hematocrit using prior art techniques. Fig. 7 illustrates glucose concentration results achieved in several ten second glucose concentration determinations with standard glucose test solutions. The tests whose results are illustrated in Fig. 7 were performed using impedance determination and compensation for the combined effects of temperature and hematocrit described above.

-20-

It will be appreciated from a comparison of these Figs. that the use of the impedance determination and compensation technique described above permits a reduction by a factor of four in the time required to achieve comparable glucose concentration determination in these test solutions.

CLAIMS:

1. An apparatus for determining the concentration of a medically significant component of a biological fluid; the apparatus comprising a cell for receiving a sample of the fluid, the cell supporting a chemistry which reacts with the medically significant component and first and second terminals across which the reaction of the chemistry with the medically significant component can be assessed, an instrument having first and second terminals complementary to the first and second terminals, respectively, of the cell, placement of the first and second terminals of the cell in contact with the first and second terminals, respectively, of the instrument permitting the instrument to assess the reaction, the instrument including an assessment controller for applying across the first and second terminals of the instrument a first signal, determining a first correction value in response of the cell to the first signal, assessing the reaction of the medically significant component with the chemistry and combining the correction value with the result of the reaction assessment to produce an indication of the concentration of the medically significant component in the sample.
2. The apparatus of claim 1 wherein the assessment controller comprises an assessment controller for applying across the first and second terminals a signal having an AC component.
3. The apparatus of claim 2 wherein the assessment controller comprises an assessment controller for applying across the first and second terminals an AC signal.
4. The apparatus of claim 1 wherein the instrument further comprises a third terminal, placement of the first and second terminals of the cell in contact with the first and second terminals of the instrument placing one of the first and second terminals of the cell in contact with the third terminal of the instrument.
5. The apparatus of claim 4 wherein the assessment controller for determining a first correction value in response to the first signal comprises an assessment controller for feeding back a portion of the first signal appearing at the third terminal.
6. The apparatus of claim 5 wherein the assessment controller for assessing the reaction of the medically significant component with the chemistry

comprises an assessment controller for applying across a pair of the first, second and third terminals of the instrument a second signal and assessing the reaction of the medically significant component with the chemistry in response to the second signal.

7. The apparatus of claim 1 wherein the assessment controller for
5 applying across the first and second terminals of the instrument a first signal comprises an assessment controller for applying across the first and second terminals of the instrument a second signal, determining a second response to the second signal, the second response determining if the assessment controller proceeds with the application of the first signal.

10 8. The apparatus of claim 7 wherein the assessment controller for applying across the first and second terminals of the instrument a second signal comprises an assessment controller for applying across the first and second terminals a signal having an AC component.

15 9. The apparatus of claim 8 wherein the assessment controller for applying across the first and second terminals of the instrument a second signal comprises an assessment controller for applying across the first and second terminals an AC signal.

20 10. The apparatus of claim 2 wherein the instrument further comprises a third terminal, placement of the first and second terminals of the cell in contact with the first and second terminals of the instrument placing one of the first and second terminals of the cell in contact with the third terminal of the instrument.

25 11. The apparatus of claim 10 wherein the assessment controller for determining a first correction value in response to the first signal comprises an assessment controller for feeding back a portion of the first signal appearing at the third terminal.

30 12. The apparatus of claim 11 wherein the assessment controller for assessing the reaction of the medically significant component with the chemistry comprises an assessment controller for applying across a pair of the first, second and third terminals of the instrument a second signal and assessing the reaction of the medically significant component with the chemistry in response to the second signal.

13. An apparatus for determining the concentration of a medically significant component of a biological fluid, the apparatus comprising a cell for

receiving a sample of the fluid, the cell supporting a chemistry which reacts with the medically significant component and first and second terminals across which the reaction of the chemistry with the medically significant component can be assessed, an instrument having first and second terminals complementary to the first and second terminals, respectively, of the cell, placement of the first and second terminals of the cell in contact with the first and second terminals, respectively, of the instrument permitting the instrument to assess the reaction, the instrument including an assessment controller for applying across the first and second terminals of the instrument a first signal having an AC component, determining a first response of the cell to the first signal, and determining based upon the first response whether to proceed with the determination of the concentration of the medically significant component of the biological fluid.

14. The apparatus of claim 13 wherein the assessment controller for applying across the first and second terminals of the instrument a first signal comprises an assessment controller for applying across the first and second terminals an AC signal.

15. The apparatus of claim 13 wherein the assessment controller for applying across the first and second terminals of the instrument a first signal comprises an assessment controller for applying across the first and second terminals of the instrument a second signal, determining a first correction value in response to the second signal, and combining the correction value with the result of the reaction assessment to produce an indication of the concentration of the medically significant component in the sample.

16. The apparatus of claim 15 wherein the assessment controller for applying across the first and second terminals a second signal comprises an assessment controller for applying across the first and second terminals a second signal having an AC component.

17. The apparatus of claim 16 wherein the assessment controller for applying across the first and second terminals a second signal comprises an assessment controller for applying across the first and second terminals an AC second signal.

18. The apparatus of claim 17 wherein the instrument further comprises a third terminal, placement of the first and second terminals of the cell in

contact with the first and second terminals of the instrument placing one of the first and second terminals of the cell in contact with the third terminal of the instrument.

19. The apparatus of claim 18 wherein the assessment controller for determining a first correction value in response to the second signal comprises an
5 assessment controller for feeding back a portion of the second signal appearing at the third terminal.

20. The apparatus of claim 19 wherein the assessment controller for assessing the reaction of the medically significant component with the chemistry
10 comprises an assessment controller for applying across a pair of the first, second and third terminals of the instrument a third signal and assessing the reaction of the medically significant component with the chemistry in response to the second signal.

21. The apparatus of claim 15 wherein the instrument further comprises a third terminal, placement of the first and second terminals of the cell in
15 contact with the first and second terminals of the instrument placing one of the first and second terminals of the cell in contact with the third terminal of the instrument.

22. The apparatus of claim 21 wherein the assessment controller for determining a first correction value in response to the second signal comprises an
assessment controller for feeding back a portion of the second signal appearing at the
third terminal.

20 23. The apparatus of claim 22 wherein the assessment controller for assessing the reaction of the medically significant component with the chemistry
comprises an assessment controller for applying across a pair of the first, second and
third terminals of the instrument a third signal and assessing the reaction of the
medically significant component with the chemistry in response to the third signal.

25 24. A method for determining the concentration of a medically significant component of a biological fluid, the method comprising providing a cell for
receiving a sample of the fluid, providing on the cell a chemistry which reacts with the
medically significant component and first and second terminals across which the
reaction of the chemistry with the medically significant component can be assessed,
30 providing an instrument having first and second terminals complementary to the first
and second terminals, respectively, of the cell, placement of the first and second
terminals of the cell in contact with the first and second terminals, respectively, of the

instrument permitting the instrument to assess the reaction, including in the instrument an assessment controller, causing the assessment controller to apply across the first and second terminals of the instrument a first signal having an AC component, causing the assessment controller to determine a first response of the cell to the first signal, and
5 causing the assessment controller to determine based upon the first response whether to proceed with the determination of the concentration of the medically significant component of the biological fluid.

25. The method of claim 24 wherein the step of applying across the first and second terminals of the instrument a first signal comprises applying across the
10 first and second terminals of the instrument a second signal, determining a first correction value in response to the second signal, and combining the first correction value with the result of the reaction assessment to produce an indication of the concentration of the medically significant component in the sample.

26. The method of claim 25 wherein the step of applying across the
15 first and second terminals a second signal comprises applying across the first and second terminals an AC second signal.

27. The method of claim 26 wherein providing an instrument having first and second terminals complementary to the first and second terminals of the cell comprises providing an instrument having first, second and third terminals, placement
20 of the first and second terminals of the cell in contact with the first, second and third terminals of the instrument permitting the instrument to assess the reaction.

28. The method of claim 27 wherein determining the second response of the cell to the second signal and converting that second response to a first correction value comprises feeding back a portion of the second signal appearing at the
25 third terminal.

29. The method of claim 28 wherein assessing the reaction of the medically significant component with the chemistry comprises applying across a pair of the first, second and third terminals of the instrument a third signal and assessing the reaction of the medically significant component with the chemistry in response to the
30 third signal.

30. The method of claim 24 wherein providing an instrument having first and second terminals complementary to the first and second terminals,

respectively, of the cell comprises providing an instrument having first, second and third terminals, placement of the first and second terminals of the cell in contact with the first and second terminal of the instrument placing one of the first and second terminals of the cell in contact with the third terminal of the instrument.

5 31. The method of claim 30 wherein determining the correction value in response to the second signal comprises feeding back a portion of the second signal appearing at the third terminal.

 32. The method of claim 31 wherein assessing the reaction of the medically significant component with the chemistry comprises applying across a pair of
10 the first, second and third terminals of the instrument a third signal and assessing the reaction of the medically significant component with the chemistry in response to the third signal.

 33. A method for determining the concentration of a medically significant component of a biological fluid, the method comprising providing a cell for
15 receiving a sample of the fluid, providing the cell with a chemistry which reacts with the medically significant component and first and second terminals across which the reaction of the chemistry with the medically significant component can be assessed, providing an instrument having first and second terminals complementary to the first and second terminals, respectively, of the cell, placement of the first and second
20 terminals of the cell in contact with the first and second terminals, respectively, of the instrument permitting the instrument to assess the reaction, providing in the instrument an assessment controller, causing the assessment controller to apply across the first and second terminals of the instrument a first signal, determining a first correction value in response to the first signal, assessing the reaction of the medically significant
25 component with the chemistry, and combining the correction value with the result of the reaction assessment to produce an indication of the concentration of the medically significant component in the sample.

 34. The method of claim 33 wherein providing an instrument having first and second complementary terminals comprises providing an instrument having
30 first, second and third terminals, placement of the first and second terminals of the cell in contact with the first and second terminals, respectively, of the instrument placing

one of the first and second terminals of the cell in contact with the third terminal of the instrument.

35. The method of claim 34 wherein determining a first response of the cell to the first signal and converting that first response to a first correction value
5 comprises feeding back a portion of the first signal appearing at the third terminal.

36. The method of claim 35 wherein assessing the reaction of the medically significant component with the chemistry comprises applying across a pair of the first, second and third terminals of the instrument a second signal and assessing the reaction of the medically significant component with the chemistry in response to the
10 second signal.

37. The method of claim 33 wherein applying across the first and second terminals of the instrument a first signal comprises applying across the first and second terminals of the instrument a second signal, determining a second response to the second signal, and determining if the assessment controller proceeds with the
15 application of the first signal.

38. The method of claim 33, 34, 35 36 or 37 wherein applying the first signal comprises applying a first signal having an AC component.

39. The method of claim 33, 34, 35, 36 or 37 wherein applying the first signal comprises applying a first AC signal.

20 40. The method of claim 37 wherein applying a second signal comprises applying a second signal having an AC component.

41. The method of claim 40 wherein applying a second signal comprises applying an AC second signal.

25 42. An apparatus for determining the concentration of a medically significant component of a biological fluid comprising a cell for receiving a sample of the fluid, the cell supporting a chemistry which reacts with the medically significant component and first and second terminals across which the reaction of the chemistry with the medically significant component can be assessed, an instrument having first and second terminals complementary to the first and second terminals, respectively, of
30 the cell, placement of the first and second terminals of the cell in contact with the first and second terminals, respectively, of the instrument permitting the instrument to assess the reaction, the instrument including an assessment controller for applying

across the first and second terminals of the instrument a first signal, for determining the identity of the sample in response of the cell to the first signal, and for producing an indication of the identity of the sample.

43. The apparatus of claim 42 wherein the assessment controller
5 comprises an assessment controller for applying across the first and second terminals a signal having an AC component.

44. The apparatus of claim 43 wherein the assessment controller
comprises an assessment controller for applying across the first and second terminals
an AC signal.

10 45. The apparatus of claim 42 wherein the instrument further
comprises a third terminal, placement of the first and second terminals of the cell in
contact with the first and second terminals of the instrument placing one of the first
and second terminals of the cell in contact with the third terminal of the instrument, the
assessment controller applying across a pair of the first, second and third terminals of
15 the instrument a second signal, determining a first correction value in response of the
cell to the second signal, assessing the reaction of the medically significant component
with the chemistry, and combining the correction value with the result of the reaction
assessment to produce an indication of the concentration of the medically significant
component in the sample.

20 46. The apparatus of claim 45 wherein the assessment controller for
assessing the reaction of the medically significant component with the chemistry
comprises an assessment controller for applying across a pair of the first, second and
third terminals of the instrument a third signal, determining a third response to the third
signal, the third response determining if the assessment controller proceeds with the
25 application of at least one of the first and second signals.

47. The apparatus of claim 42 wherein the assessment controller
further comprises a third terminal, placement of the first and second terminals of the
cell in contact with the first and second terminals of the instrument placing one of the
first and second terminals of the cell in contact with the third terminal of the
30 instrument, the assessment controller applying across a pair of the first, second and
third terminals of the instrument a second signal, determining a second response to the

second signal, the second response determining if the assessment controller proceeds with the application of the first signal.

48. A method for determining the concentration of a medically significant component of a biological fluid comprising providing a cell for receiving a sample of the fluid, providing on the cell a chemistry which reacts with the medically significant component and first and second terminals across which the reaction of the chemistry with the medically significant component can be assessed, providing an instrument having first and second terminals complementary to the first and second terminals, respectively, of the cell, placement of the first and second terminals of the cell in contact with the first and second terminals, respectively, of the instrument permitting the instrument to assess the reaction, providing in the instrument an assessment controller for applying across the first and second terminals of the instrument a first signal, determining the identity of the sample in response of the cell to the first signal, and producing an indication of the identity of the sample.

49. The method of claim 48 wherein the step of providing an instrument having first and second terminals comprises the step of providing an instrument having first, second and third terminals, placement of the first and second terminals of the cell in contact with the first and second terminals of the instrument placing one of the first and second terminals of the cell in contact with the third terminal of the instrument, the assessment controller applying across a pair of the first, second and third terminals of the instrument a second signal, determining a first correction value in response of the cell to the second signal, assessing the reaction of the medically significant component with the chemistry, and combining the correction value with the result of the reaction assessment to produce an indication of the concentration of the medically significant component in the sample.

50. The method of claim 49 wherein the assessment controller applies across a pair of the first, second and third terminals of the instrument a third signal and determines a third response to the third signal, the third response determining if the assessment controller proceeds with the application of at least one of the first and second signals.

51. The method of claim 48 wherein the step of providing an instrument having first and second terminals comprises the step of providing an

-30-

instrument having first, second and third terminals, placement of the first and second terminals of the cell in contact with the first and second terminals of the instrument placing one of the first and second terminals of the cell in contact with the third terminal of the instrument, the assessment controller applying across a pair of the first, 5 second and third terminals of the instrument a second signal and determining a second response to the second signal, the second response determining if the assessment controller proceeds with the application of the first signal.

1/6

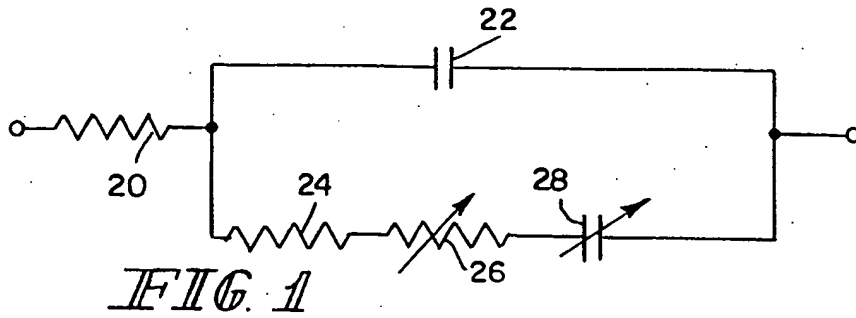


FIG. 1

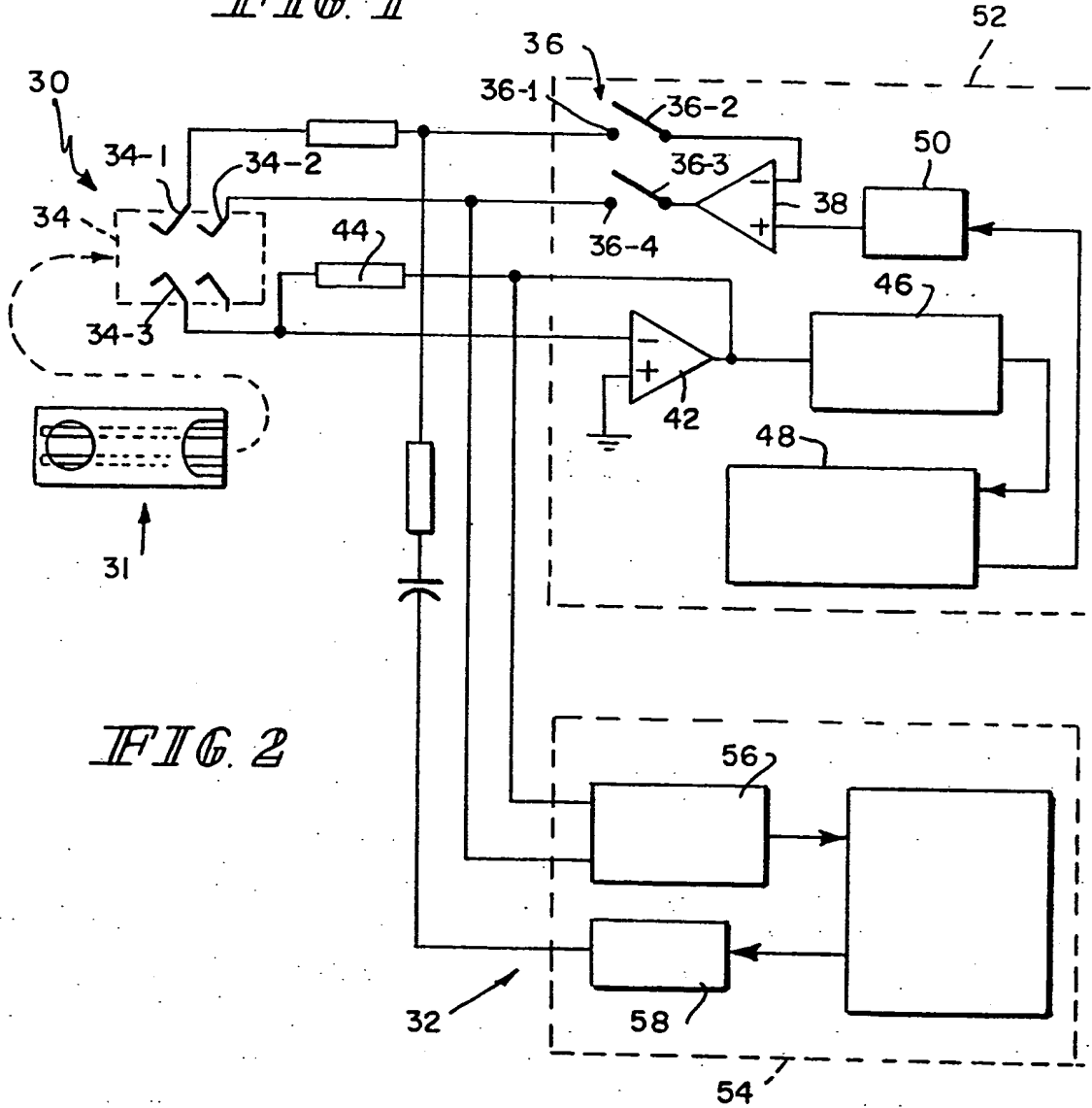


FIG. 2

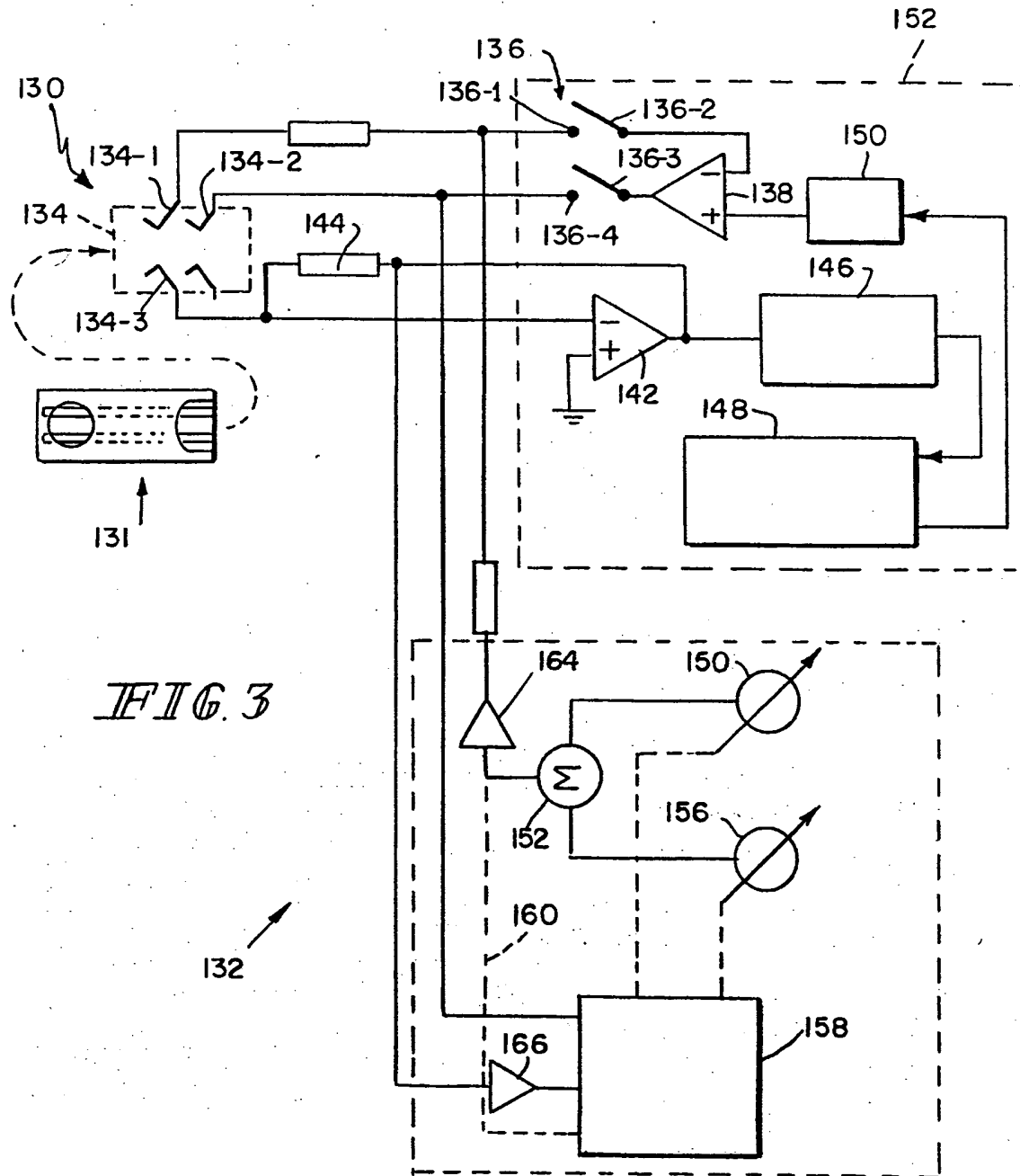


FIG. 3

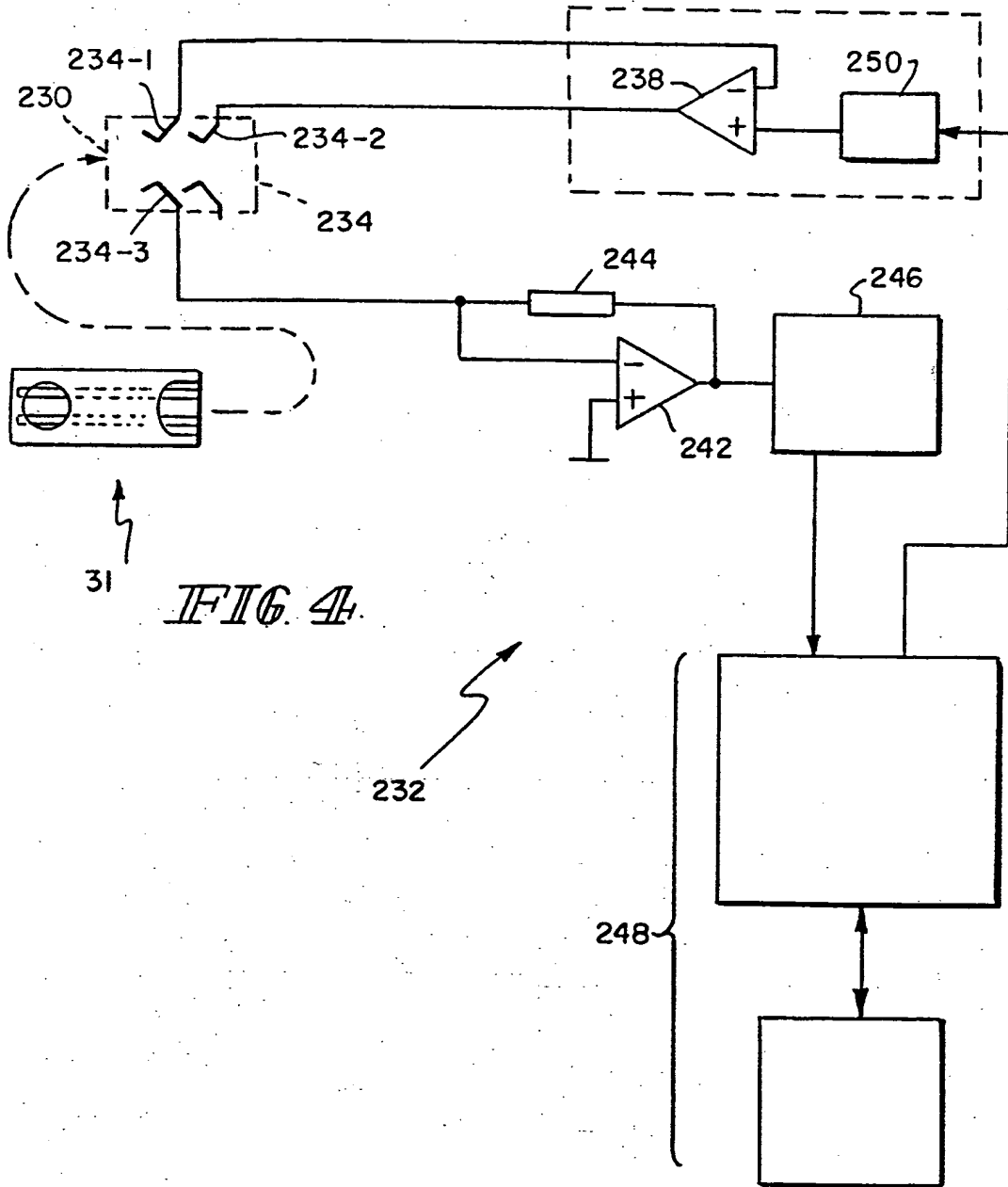


FIG. 4

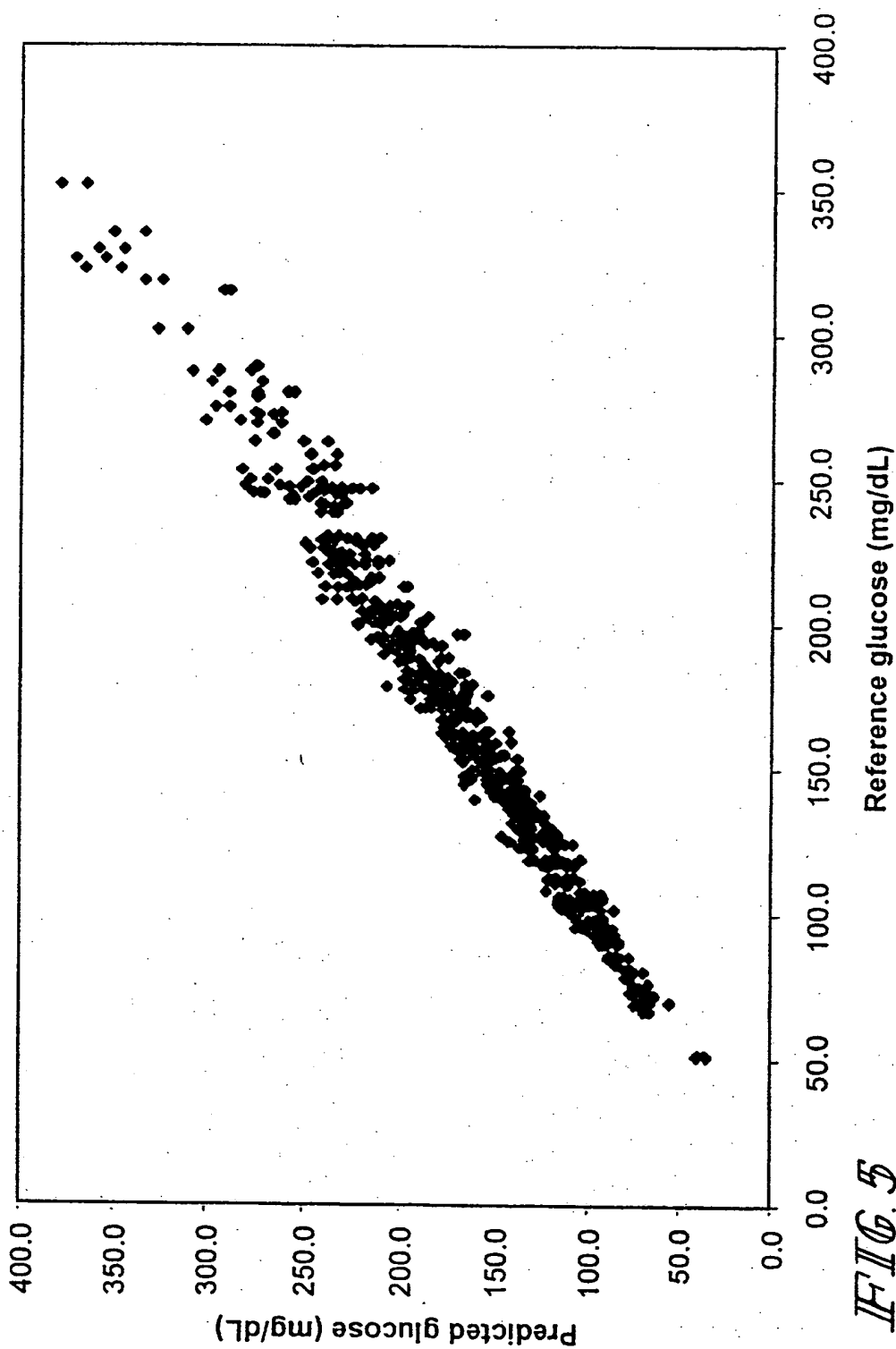


FIG. 5

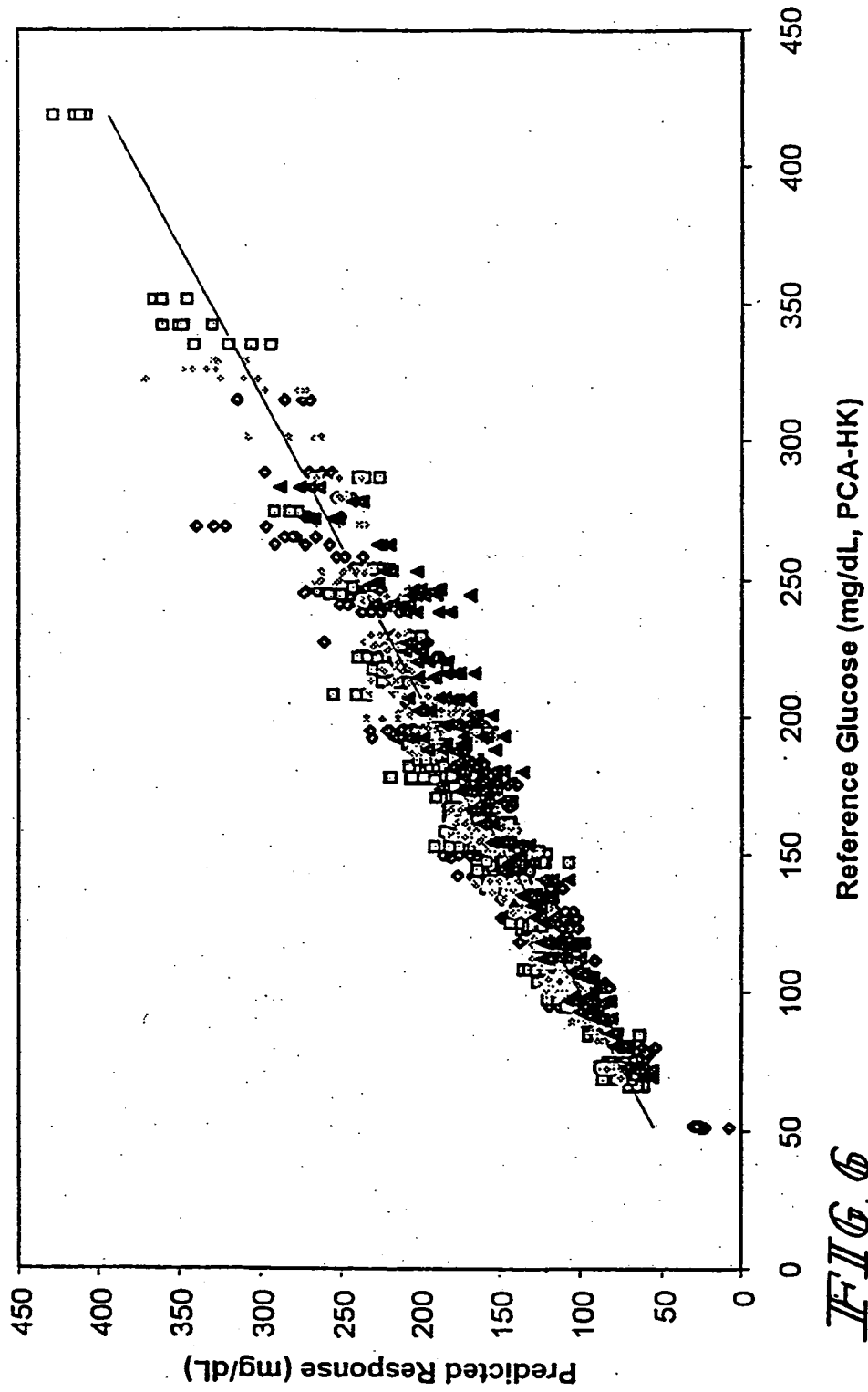


FIG. 6

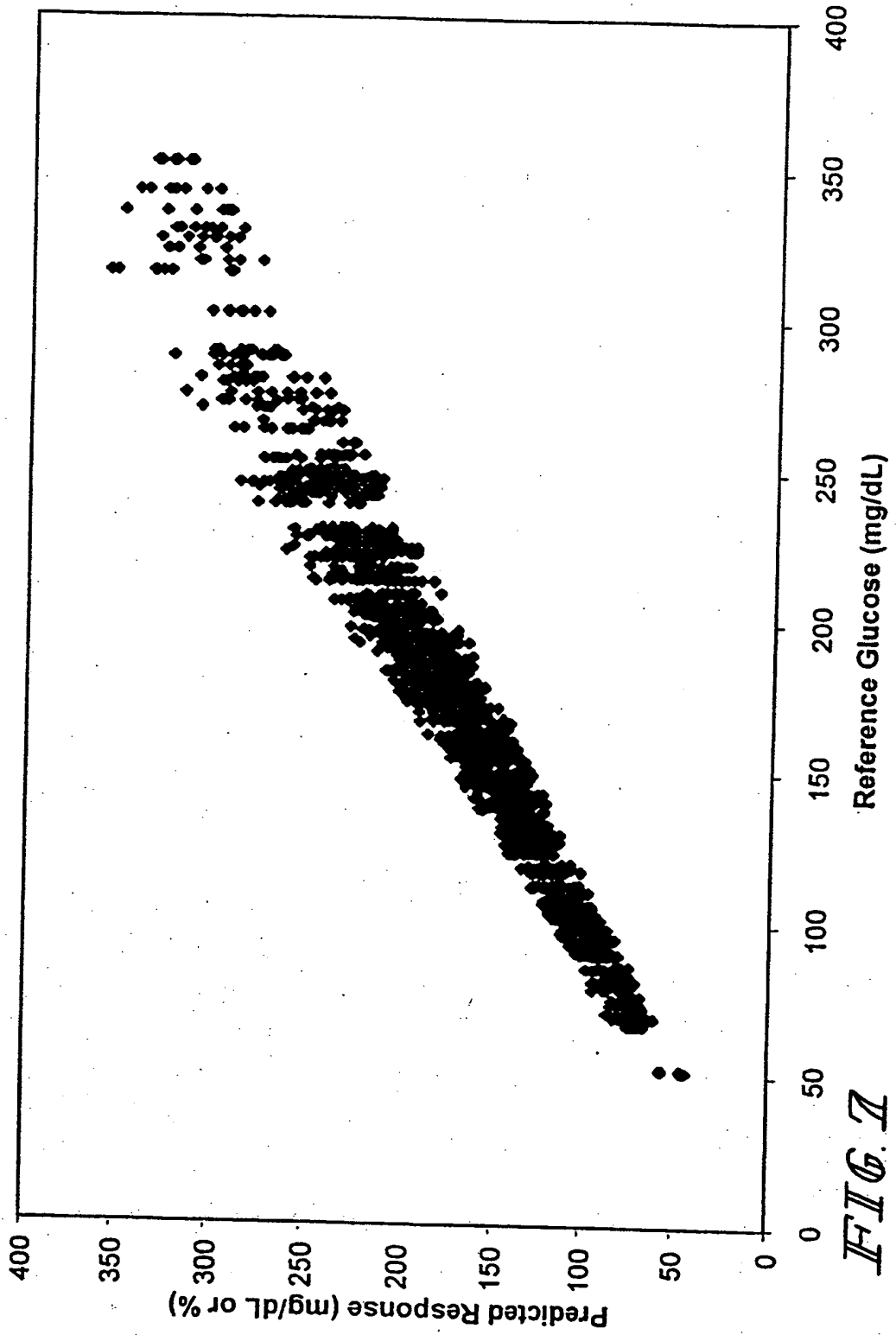
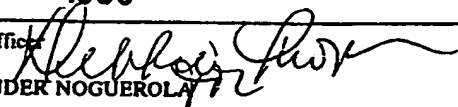


FIG. 7

INTERNATIONAL SEARCH REPORT

International application No.
PCT/US98/27203

A. CLASSIFICATION OF SUBJECT MATTER IPC(6) : G01N 27/26, 27/02, 27/28 US CL : 324/444; 204/401, 403; 205/775 According to International Patent Classification (IPC) or to both national classification and IPC		
B. FIELDS SEARCHED Minimum documentation searched (classification system followed by classification symbols) U.S. : 324/444; 204/401, 403; 205/775 Documentation searched other than minimum documentation to the extent that such documents are included in the fields searched Electronic data base consulted during the international search (name of data base and, where practicable, search terms used) Please See Extra Sheet.		
C. DOCUMENTS CONSIDERED TO BE RELEVANT		
Category*	Citation of document, with indication, where appropriate, of the relevant passages	Relevant to claim No.
X	US 4,652,830 A (BROWN) 24 March 1987 (24/3/87), see abstract; Figures 1A-1C, 2, 8A-8E, and 10A-10C; column 1, lines 42-64; col. 2, ln. 11-15, ln. 21-23; col. 4, ln. 46-56; and col. 5, ln. 40-45; col. 5, ln. 63 - col. 6, ln. 25; col. 15, ln. 8 - col. 16, ln. 55; and col. 16, ln. 56 - col. 17, ln. 52.	1-41
Y		42-51
Y		US 4,713,347 A (MITCHELL ET AL.) 15 December 1987 (15/12/87), column 38, lines 20-25; and col. 40, ln. 46-51.
.	.	.
.	.	.
.	.	.
<input checked="" type="checkbox"/> Further documents are listed in the continuation of Box C. <input type="checkbox"/> See patent family annex.		
* Special categories of cited documents: *A* document defining the general state of the art which is not considered to be of particular relevance *B* earlier document published on or after the international filing date *L* document which may throw doubts on priority claim(s) or which is cited to establish the publication date of another citation or other special reason (as specified) *O* document referring to an oral disclosure, use, exhibition or other means *P* document published prior to the international filing date but later than the priority date claimed	*T* later document published after the international filing date or priority date and not in conflict with the application but cited to understand the principle or theory underlying the invention *X* document of particular relevance; the claimed invention cannot be considered novel or cannot be considered to involve an inventive step when the document is taken alone *Y* document of particular relevance; the claimed invention cannot be considered to involve an inventive step when the document is combined with one or more other such documents, such combination being obvious to a person skilled in the art *A* document member of the same patent family	
Date of the actual completion of the international search 08 MARCH 1999	Date of mailing of the international search report 09 APR 1999	
Name and mailing address of the ISA/US Commissioner of Patents and Trademarks Box PCT Washington, D.C. 20231 Facsimile No. (703) 305-3230	Authorized officer  ALEXANDER NOGUERA Telephone No. (703) 308-0661	

INTERNATIONAL SEARCH REPORT

International application No.

PCT/US98/27203

B. FIELDS SEARCHED

Electronic data bases consulted (Name of data base and where practicable terms used):

CAPLUS

search terms: AC, alternating current, alternating voltage, impedance, imaginary, electrode, blood, glucose, oxidase, oxidoreductase